

- CNC Examination Simulator : Exam-CNC

| About | Case Study | Testimonial | Package |

About   

▢ Introduction

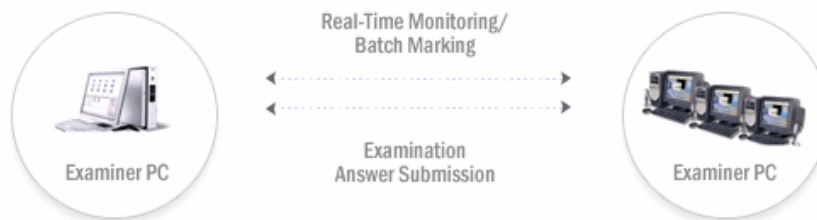
Exam-CNC means Examination-Computer Numerical Control

Exam-CNC has been designed specifically for CNC-test and Level-Testing purposes about General CNC.

Examinees can take the exam without using Real Machine.

Exam-CNC is useful for quiz, midterm and final test.

Exam-CNC can be substituted certification test related on CNC engineer.



▢ Effect

- Education needs confirmation whether students understand NC code and CNC operating.
- General-test can only examine students on NC code because it is taken by paper.
- General-test ought to examine students again on CNC operating using insufficient machines and daring danger.
- Exam-CNC can make each student's mark list very fair



General test



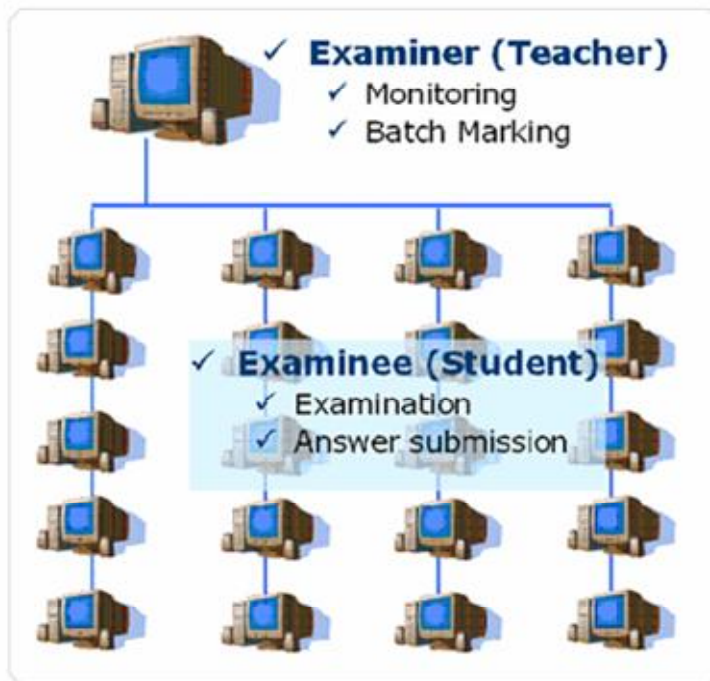
Real Machine



Real Machine

▢ System configuration

- To use Exam-CNC, a Network must be required.
- A large test by Exam-CNC is available anywhere on the internet environment.



Function

* Examination

- Examinees can take the exam without using Real Machine.
- Machining Process Function as real machine.



* Monitoring

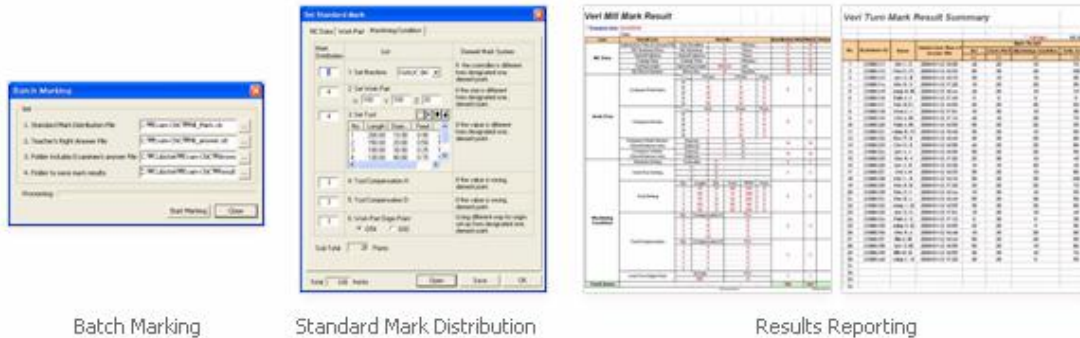
- Display & Monitor Examinee's status
 - Color monitoring
- PC on/off, Examining, Submission, Disconnection, Other Utility activity, Quit, Starting & End time.
Simple examination class room set up by drag and drop.
Real-Time Monitoring



Real-Time Monitoring

* Batch Marking

- To Offer various Standard Mark List. (NC-Data/Work-Part/Machining-Condition)
- Output of individual examinee's detail test results sheet
- Output of total test results sheet which includes examinees' mark
- Batch / Individual Marking Function



Batch Marking

Standard Mark Distribution

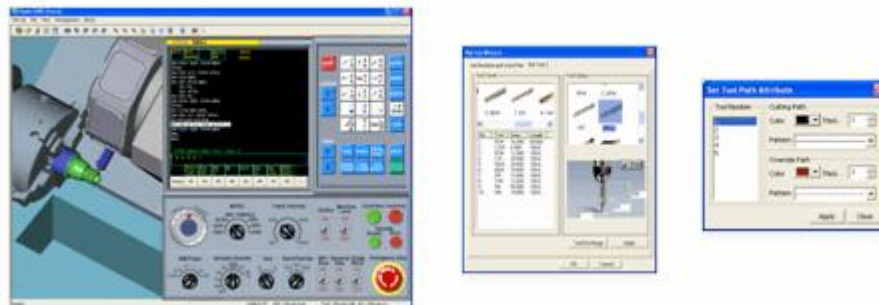
Results Reporting

* Cheating Prevention

- After answer submission, Exam-CNC will be closed automatically and remain no-data.
- All examinees' work process and status are monitored and recorded.
- The active status of other programs is also monitored ,recorded and warns to Examiner.
- An examinee's data related to the answer can not be used for other examinees.
- The same ID check-in Prohibition Function

* Machining and Verification

- Machining (Simulation)
 - . Various shape of tool support (coner R, end mill..)
 - . Machining Simulation Function like general Simulator (eg. V-CNC)

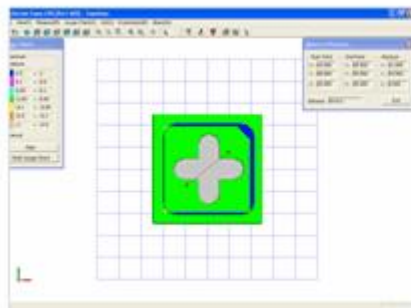


Machining Simulation

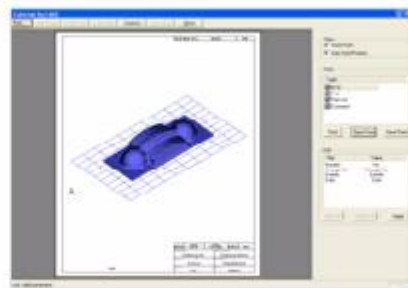
Various Tools

Tool path setting

- Verification (Examiner Module)
 - . Dimension Check (Mill/Turn)
 - . Drawing Print function
 - . User setting (work-Part color, tool path attribute..)



Gough Check



Print Function