

- Electric Simulator : V-ELEQ

| About | Case Study | Testimonial | Package |

+ About    

▣ Introduction

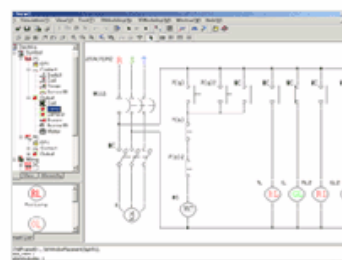
V-ELEQ is Virtual-Electric Equipment

This simulating software explains elements of Mechatronics such as electricity, Pneumatic, PLC, etc., designs and analyzes systems of these elements. It is able to make circuit diagrams composed of elements and 3D models to simulate interactive operation.

▣ Electric Design

* Circuit Design

- Electric connection desing
- Wiring Property definition of color and thickness
- Short circuit error message
- Capacity setting up
- Various component such as power supply, motor, LED, relay and etc.
- Based on IEC and KS standard
- DC and AC circuit

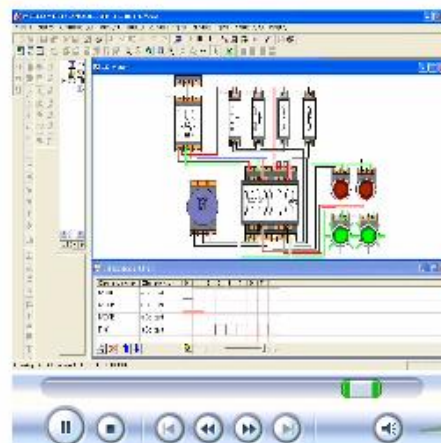


Sequence diagram of Motor control

▣ Simulation and Verify

* Circuit Design

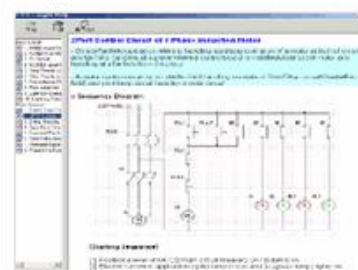
- Electric connection desing
- Wiring Property definition of color and thickness
- Short circuit error message
- Capacity setting up
- Various component such as power supply, motor, LED, relay and etc.
- Based on IEC and KS standard
- DC and AC circuit



Sequence diagram of Motor control

▣ Educational Feature

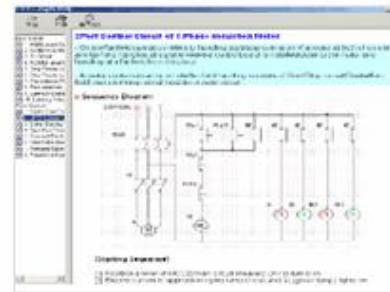
- Multimedia educational Help
- Electric sequential and wiring applied circuit
- Various examples and simulating in same time



Multimedia Help with simulation

▣ Educational Feature

- Multimedia educational Help
- Electric sequential and wiring applied circuit
- Various examples and simulating in same time



Multimedia Help with simulation

▣ Optional functions

*** PLC**

- Any PLC model supporting LD, FBD, SFC of IEC, ... programming language supported
- Plural number of PLC program could be executed simultaneously to make Tag List and printing it
- Setting up the number of IN/OUT channel
- Direct connection using channel of PLC and Equipment
- Plural PLC supported

*** Automatic control libraries**

- Cylinder, conveyor, sensor, robot and etc.



Sequence diagram of Motor control

▣ Use Environment

	Basic Spec	Recommend Spec
CPU	Pentium II 300MHz	Pentium III 500MHz
OS	Windows 2000 / XP	
MEMORY	64MB	128MB~
DISPLAY	800 x 600 16 Million Color 4MByte Video Memory	1024 x 768 32 Million Color 32MByte Video Memory
HDD	300MB	500MB~