

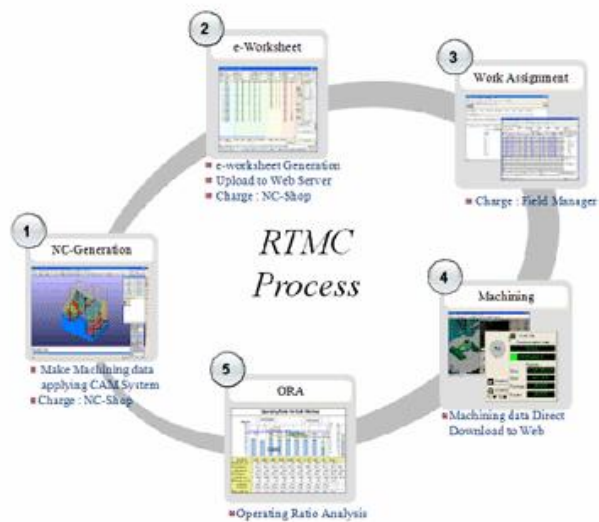
- Real Time Monitoring & Control : **RTMC**

| About | Case Study | Testimonial | Package |

About   

Concept

Automatic accomplishment for the work allocation through automatic NC Generation and on-line network & Machine Operating Ratio..



Purpose

e-Work sheet

- Efficient transfer of machining information and its offer (Record error and lost minimum)
- Foundation construction of Total machining information (Cutting time estimation, Machine assignment)
- Paperless and Data-Base for Work-sheet (Technology form unmanned processing)
- Tree view type various Library (Conveyor, Robot, Sensor, Cylinder, Motor, Switch)

ORA(Operating Ratio Management)

- Reliability improvement of machining management and efficient management system development
- Real monitoring through Web
- Estimation of cutting time and actual result for each Machine.
- Visible Management

Function

e-Work sheet

- e-Worksheet(Paperless)
- Machining data & information transfer through web(web based)
- Cutting Time estimation
- Work Allocation at each machine through web
- ATC(Schedule Machining) File Generation

	A	B	C	D	E	F	G	H	I	J	K	L	M	N	O	P	Q	R	S	T	U	V	W	X				
1	e-Worksheet																											
2	Access 1.0																											
3	Class	BC		Site		OP10		M.Step		Fine Cuttins		Wert		New		Assy		Assy		Water		Review	Acc.					
4	Item	SIDE OTR RH		Piece		Lower		Detail Piece				MAIN				Charge		Tooling center										
5	EO			Master		Upper		Thick.				L/R		R/L		Tel						9701021765						
6	NO	NC File		Tool Information				ATT Info				Machining Information								Die setting Info.								
7		Holder	Type	D.	L.	Port	Offset	Type	S	C	Type	Method	Alm.	RPM	FEED	Time	Alt	Note										
8	1	11a4011	C63 Ball	30	30	0					Mis. PENCIL	-0.55		1250	0.47	0		St. Point	Ref.	ONE S/P								
9	2	11a4012	C63 Ball	30	30	0					Mis. PENCIL	-0.55		1250	0.47	0			X	0								
10	3	11a4013	C63 Ball	30	30	0					Mis. PENCIL	-0.55		1250	0.47	0			Y	0								
11	4	11a4014	C63 Ball	30	30	0					Mis. PENCIL	-0.55		1250	0.47	0			Z	200								
12	5	11a4015	C63 Ball	30	30	0					Mis. PENCIL	-0.55		1250	0.47	0			Height	0								
13	6	11a4016	C63 Ball	30	30	0					Mis. PENCIL	-0.55		1250	0.47	0			Ref Plan									
14	7	11a4017	C63 Ball	30	30	0					Mis. PENCIL	-0.55		1250	0.47	0			Attach info.									
15	8	11a4018	C63 Ball	30	30	0					Mis. PENCIL	-0.55		1250	0.47	0			Coord	Tol								
16	9	11a4019	C63 Ball	30	30	0					Mis. PENCIL	-0.55		1250	0.47	0				TY								
17	10	11a4020	C63 Ball	30	30	0					Mis. PENCIL	-0.55		1250	0.47	0				TZ								
18	11	11a4021	C63 Ball	30	30	0					Mis. PENCIL	-0.55		1250	0.47	0			Rotate	RZ								
19	12	11a4022	C63 Ball	30	30	0					Mis. PENCIL	-0.55		1250	0.47	0				Rd								
20	13	11a4023	C63 Ball	30	30	0					Mis. PENCIL	-0.55		1250	0.47	0				No								
21	14	11a4024	C63 Ball	30	30	0					Mis. PENCIL	-0.55		1250	0.47	0			St. Point	Ya								
22	15	11a4025	C63 Ball	30	30	0					Mis. PENCIL	-0.55		1250	0.47	0				Za								
23	16	11a4026	C63 Ball	30	30	0					Mis. PENCIL	-0.55		1250	0.47	0				Setting Drawing sheet								
24	17	11a4027	C63 Ball	30	30	0					Mis. PENCIL	-0.55		1250	0.47	0												
25	18	11a4028	C63 Ball	30	30	0					Mis. PENCIL	-0.55		1250	0.47	0												
26	19	11a4029	C63 Ball	30	30	0					Mis. PENCIL	-0.55		1250	0.47	0												
27	20	11a4030	C63 Ball	30	30	0					Mis. PENCIL	-0.55		1250	0.47	0			Caution									
28	21	11a4031	C63 Ball	30	30	0					Mis. PENCIL	-0.55		1250	0.47	0												
29	22	11a4032	C63 Ball	30	30	0					Mis. PENCIL	-0.55		1250	0.47	0												
30	23	11a4033	C63 Ball	30	30	0					Mis. PENCIL	-0.55		1250	0.47	0												
31	24	11a4034	C63 Ball	30	30	0					Mis. PENCIL	-0.55		1250	0.47	0												
32	25	11a4035	C63 Ball	30	30	0					Mis. PENCIL	-0.55		1250	0.47	0												
33	26	11a4036	C63 Ball	30	30	0					Mis. PENCIL	-0.55		1250	0.47	0												
34	ATC	Start NC		END NC		Total Time														1	2	CAD DATA						
35	11a4037	1		22		103952														Sheet/Sheets								

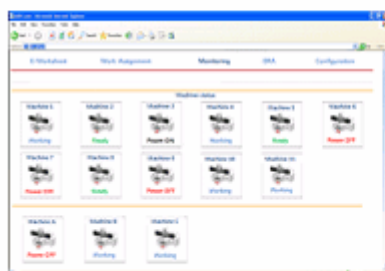
e-Work sheet

ORA(Operating Ratio Management)

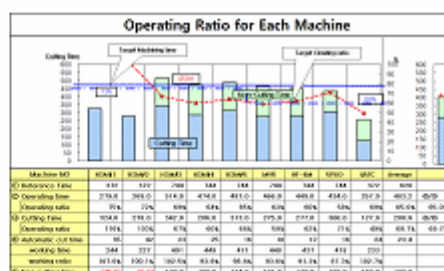
- Real Monitoring of Machine status through web
- Visible Monitoring
- Machine Operating Ratio Analysis(Monthly, Individual, Total)
- Visible Web Report & Excel data report

ORA(Operating Ratio Management)

- Real Monitoring of Machine status through web
- Visible Monitoring
- Machine Operating Ratio Analysis(Monthly, Individual, Total)
- Visible Web Report & Excel data report



Monitoring



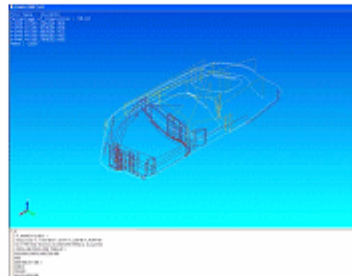
ORA (Operating Ratio Analysis)

DNC(Direct Numerical Control)

- Machining Data(include NC-DATA) download through web
- Direct access to data-base(SQL)



DNC Window



NC View

Layout

